



CEDAR CREEK  
**CABIN**  
RENTALS

# HOME MANUAL GUIDE

We are so pleased you have decided to book with us and hope you have an enjoyable stay!

The details in this guidebook will help you make the most of your vacation.

Please make yourself comfortable and enjoy our cabin as much as we do.

**Cedar Creek Cabin Rentals Team**



TABLE OF CONTENTS

# HOME MANUAL GUIDE



**03**

CONTACT DETAILS

**04**

HOUSE RULES

**05**

THINGS SUPPLIED IN THE CABIN

**06**

PLANNING A HIKE

**07**

HOT TUB USE

**09**

JACUZZI GUIDE

**13**

HOW TO OPERATE  
THE NEST THERMOSTAT

**15**

GAS / WOOD FIREPLACE GUIDE

**16**

CHECKOUT NOTICE

**17**

RESTAURANTS NEARBY

**22**

THINGS TO DO AROUND

**28**

MAP GUIDE OF HELEN

**29**

SHOPPING

**30**

TRAILS & HIKING



# CONTACT DETAILS

Emergency Number: Cleveland / Helen GA

White City Ambulance Service #706-865-7475

Cleveland Fire Dept - #706-865-0617

NGPG Urgent Care Cleveland #706-348-4280

White City 911 office #706-865-1224

Helen Police Department #706-878-2722

## Cedar Creek Cabins Contact Information

Main Office # (770)952-4130

Office Hours: Mon-Fri 9AM-6PM, Sat 9AM-1PM, Sun CLOSED

You can text also (404) 480-2324

Email address: [info@cccabins.com](mailto:info@cccabins.com)

You can call, text, or email no matter the time.

We will return your messages during normal  
business hours.

# HOUSE RULES

**Check-In Time: 4PM - Check-Out Time: 11AM**

Note: Please leave the place reasonably clean. No food dishes put into the dishwasher and please take the trash outside. Any excessive food and dishes will result in extra cleaning charges.

Due to heavy demand, it is imperative to check out by 11:00 so that we may have the cabins ready for check in by 4:00. We will be charging \$200/hr for checking out after 11 am. Our cleaning staff will be positioned at the cabin at 11:00 am to begin their cleaning so that we may get it ready for our next guest.

## HOUSE RULES

- No smoking. Smoking and cigarette butt littering is strictly forbidden inside the cabins and will result in a \$250 fee and eviction if violated. No parties. Bringing more people by the cabin to party or having more than 3 cars at the cabin will result in being asked to leave without a refund.
- Please respect your neighbours and keep the noise level down between the hours of
- 10:00 p.m. and 8:00a.m.
- No guns. Shooting guns is prohibited and will result in immediate eviction.
- ATV's not allowed on the property.
- Peace and quiet is our priority so large / loud parties are prohibited and are subject to
- immediate eviction.
- We provide towels and linens based on the number of guests. If they are removed or
- destroyed, a fee (\$10 per towel and \$25 per sheet) to replace them will be charged to
- your credit card.
- Do not flush sanitary napkins as it can result in major damage to the septic system.
- Please leave the premises reasonably clean. Clean kitchenware, dishes, grill, and
- fireplace. Please take out the trash. If available, please transfer ashes from the
- fireplace to the firepit.
- Please do not burn candles inside the cabin.
- If you leave behind any items, we'll happily return them for the cost of mailing and a
- small fee.

**Office Hours:** Mon-Fri 9AM-6PM, Sat 9AM-1PM, Sun CLOSED

**In case of an emergency, please call 911.**

For optimal cabin experience, we highly suggest guests arrive at the cabin between 4pm to 5pm. There is nothing more frustrating than arriving at night to a place you have never been and especially in a rural area where GPS is not reliable. We also recommend printing out the directions to your cabin.

We do our absolute best for our guests to have a perfect stay. However, there may be things that we may overlook. When guests get to their cabins during office hours, our staff will be there to assist you should you find something not operable.

### **PARKING:**

- 2 cars for 1–2-bedroom cabins and 3 cars at 3-4 cabins are allowed. If you intend to have more cars, please contact us, or risk cabin eviction.

# THINGS SUPPLIED IN THE CABIN

Supplies cleaners leave:

- 1 roll of paper towel
- 2 rolls of toilet paper per bathroom
- 5 kitchen trash bags (under kitchen sink) (Also leave one bag in every trash can)
- 3 dish washer tabs
- 1 bottle of dish washer soap (ex:dawn)
- 1 bottle of hand soap per bathroom
- 1 broom
- 1 potholder
- 1 kitchen towel
- fire extinguisher - in kitchen
- one plunger
- Every king and Queen bed receives 4 large towels, 2 wash clothes
- Every twin bed receives 2 towels, 1 wash cloth
- Every bathroom has 1 hand towel

# PLANNING A HIKE

You are in the wooded mountain region; you may be looking to enjoy nature in and around Helen or even at Cedar Creek. Things to know before hiking:

- Please do protect yourself when outdoors in the wooded areas by wearing protective clothing.
- We would not advise walking in the woods with flip-flops or shorts.
- Wearing tightly woven clothing with covered shoes and socks are advised and spray your clothing with bug spray to help avoid bugs like Chiggers.
- Chiggers will not harm you but will leave a red mark on your skin that itches and normally show up after 24 hours of being in the woods.
- Not to worry too much as they only itch a day or so.
- No, it is not a bed bug (we and professionals inspect for those), you walked around in the woods uncovered and they showed up the next morning. Google Chiggers to find out more.
- If you have been in heavy bush, we would advise washing your clothes too.

Now cover up, throw on some protective spray and enjoy the woods!

Thanks,

Cedar Creek Cabins Rentals

(770)952-4130

# HOT TUB USE

Hot tub: All our cabins are on well water. Every hot tub is drained, cleaned, and refilled after each guest so your water is clean and sanitary. Due to the nature of being on a well, there are common minerals such as iron that may cause the water to appear different colors and there could be some sediment.

We have provided a screen so you can clear out any sediment that should come from the well.



Please shower off before entering the hot tub to keep it clean during your stay.

There will be a \$50 charge to come out and drain and refill if you caused the water to be dirty.

Usage: Simply hit the jets button to turn on the jets and temperature up/down to adjust the temperature.

Thanks,

Cedar Creek Cabins Rentals

(770)952-4130

# TV GUIDE OPERATION

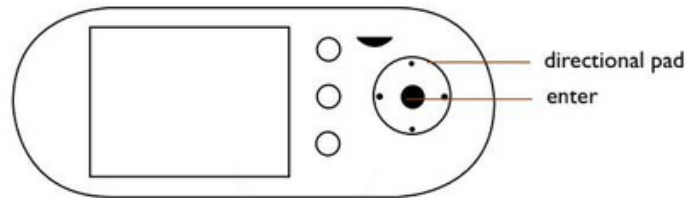
## Streaming

- Turn tv on and go to the streaming service you utilize and input your id and password.



# JACUZZI GUIDE

**Note:** This jacuzzi tub is for the following cabins: Oasis, Pure Gold, Radiance, Destiny, Great Escape, Dreamscape, Tranquility One, Tranquility Two, Sky's the Limit, Top of the line



**MENU NAVIGATION** The main menu consists of icons that enable you to adjust your Jacuzzi Bathing experience.

Navigate the icons by pressing the directional pad. Once the icon is highlighted, press the enter button to access the menu.



## QUICK START MENU

Use the 'quick start buttons' to turn on your whirlpool or airbath or go to the main menu.



Use the main menu to make adjustments to the current whirlpool and airbath settings.

# JACUZZI GUIDE



**Whirlpool Control Menu** From this screen you can control the speed of your whirlpool motor, the amount of air in both the left and right-side jets and adjust the wave air control feature.



## **Whirlpool Motor Speed Control**

Adjust the speed of your whirlpool motor, using the left and right arrow keys and pressing enter.

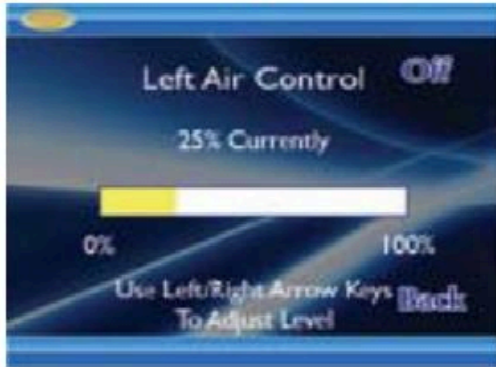


# JACUZZI GUIDE



## Left Air Control

## Right Air Control



Adjusting the setting up to 100% will increase the amount of air in the water lines, providing a gentler massage.



## Air Bath Control Menu\*

From this screen you can control the speed of your air bath, the dry cycle settings, the air bath wave and pulse controls.



# JACUZZI GUIDE



**Lighting Controls** Use this menu to control the tub lighting.

You can turn on the lights, as well as control their colors and the speed the colors change if desired.



## **Main Menu Icons**

Control all whirlpool functions



Control all air bath functions



Turn on/off/rotate the 256 color lights



Return to quick start menu



Activate pre-set experiences



Adjust system settings

# HOW TO OPERATE THE NEST THERMOSTAT

**Are You Seeing the Password Screen?** If the password screen shows up, please pass through this by pressing the front of the nest device, like a button. This press will bypass the password screen. After you pass through the password, simply adjust as below within the range of 60-75 in the winter and down to 70 in the summer. Max temperature to 75 degrees in winter. Should you go past those temperatures, the password screen will come up and you will need to pass through it again.

## How To Adjust The Temperature



On the temperature setting screen, you can rotate the device between 70-80 degrees in the summer and 60-75 degrees in the winter. The conditioning unit can freeze up attempting to go below 70 degrees in the summer.

Note 1: In the summer, it will be on cool only and in the winter, it will be on heat only.

Note 2: The HVAC system will not work if you try to heat part of the house and cool another. All thermostats must be working on either heat or cool mode.

# NEST THERMOSTAT FOR BEAR HOLLOW AND RADIANCE CABINS



## NOTE FOR ESCAPE CABIN:

The thermostat is on the wall by the bathroom on main floor, remotes for the unit upstairs and downstairs.

# GAS / WOOD FIREPLACE GUIDE

## HOW TO LIGHT A GAS FIREPLACE

**NOTE: FOR DESTINY, GREAT ESCAPE, AND DREAMSCAPE CABINS**

Link to the video: <https://youtu.be/AS1Aip1CWuM>

1. Flame for pilot light must be on for fireplace to work.
2. Please always leave the pilot light on even when not in use so that the next guest can easily start the gas fireplace.
3. Turn on gas and click igniter to start flame.
4. Turn off flame when not in use.

## HOW TO LIGHT A WOOD FIREPLACE

- Ensure that all air vents are open in the fireplace. Put the log on the bottom of the fireplace. Add one or two layers of kindling. Make sure to space the pieces of wood as air is important for fire.
- Put a couple of firelighters on top of the kindling wood or some paper.
- Light the wood.

# CHECKOUT NOTICE

## BEFORE YOU LEAVE, PLEASE READ THIS

### **CHECK-OUT TIME: 11AM**

We hope your stay with us was wonderful.

**This a friendly reminder that check-out is at 11 AM.**

---

If you have had any issues, please give us a call before you leave at 770-952-4130

Before you leave, please review the following check-out items:

- Place all dirty towels in the shower.
- Please load and run the dishwasher.
- If the weather is warm, please set the thermostat to 80 degrees. If the weather is cold, please set the thermostat to 60 degrees.
- Check and ensure your fireplace has been put out before leaving.
- Please lock all the doors and windows.
- Check all rooms for left-behind items.
- Please place all waste in the trash bags provided (located under the sink) and into the garbage bin located outside.

Please let us know if anything has been broken or damaged during your stay, your damage waiver will cover the expense.

**Note: Please leave the place reasonably clean. No food dishes put into the dishwasher and please take the trash outside. Any excessive food and dishes will result in extra cleaning charges.**

**Due to heavy demand, it is imperative to check out by 11:00 so that we may have the cabins ready for check in by 4:00. We will be charging \$200/hr for checking out after 11 am. Our cleaning staff will be positioned at the cabin at 11:00 am to begin there cleaning so that we may get it ready for our next guest.**



# RESTAURANTS NEARBY

## Bodensee

**Specialty:** German Food

This beautiful alpine city in the North Georgia mountains transports you to the German Alps. Relax with us for a quick delicious lunch or enjoy a fine evening of dining with the family. Located in the center of Helen, we offer a wide variety of German foods for any taste. Open for lunch and dinner featuring Chef Aurel Prodan's culinary specialties. Our staff is here to serve you and your family!

**Phone:** 706-878-1026

**Address:** 64 Munich Strasse, Helen Georgia  
30545

# RESTAURANTS NEARBY

## Paul's Steakhouse

**Specialty:** Steak & Seafood

Since 1965 Paul's Steakhouse has been well-regarded for its seared steaks, cooked to perfection. A casual atmosphere and a friendly staff create a cozy environment where folks can enjoy cocktails, a meal, and some welcome conversation. Enjoy a steak or seafood, and delicious side items and drinks. All in the heart of Helen near the bridge.

**Phone:** 706-878-2468

**Address:** 8537 S. Main Street Helen, GA 30545

## Troll Tavern

**Specialty:** German Food

The Troll Tavern & Restaurant is as it says located 'Under The Bridge' 'On The River" in downtown Helen Georgia. Where else would you expect to find a Troll?

Open 7 days a week, the Troll Tavern specializes in German Fare, Salads, Sandwiches, Wraps, Seafood, Soups & Nachos.

**Phone:** 706-878-3117

**Address:** 8590-B Main St. Helen, GA

# RESTAURANTS NEARBY

## ⚙️ La Cabana Mexican Restaurant

**Specialty:** Mexican Food

La Cabaña was founded in 1996 by Miguel and Patricia Arcé after years of working in the sophisticated upscale cuisine industry at such well-known restaurants as The Redwoods and Erna's Elderberry House.

Miguel wanted to go out on his own to share his home State's unique Mexican cuisine, at an affordable price and because the time had come to make his own unique culinary statement. And has he ever.

**Phone:** 706-878-3456

**Address:** 8160 S Main St. Helen, GA

## ⚙️ Spice 55

**Specialty:** Thai Food & Sushi

"Food was absolutely amazing! Ordered the crab wonton appetizer and it was perfect. Ordered the volcano roll and hands down, the BEST sushi I have ever eaten. Husband ordered the duck and said it was amazing. Service and atmosphere were the best. Highly HIGHLY recommend!" -Tiffany H.

"It one of our favorite places in Helen! I've been to Thailand and the food is authentic and the owners and operators are very friendly and always treat me well. I would eat there everyday if I could and I also refer my customers to this location." - Mountain Laurel Farm

**Phone:** 706-878-1010

# RESTAURANTS NEARBY

## Cowboys and Angels

### Restaurant and Bar

**Specialty:** Steaks, Seafood, Aged Angus Burgers

Cowboys and Angels Restaurant and Bar is a place you can enjoy lunch or dinner and get a taste of southern class!

At Cowboys and Angels, we are committed to creating a fun and friendly atmosphere for our customers and live up to our tradition of warm hospitality here in the South.

**Phone:** 706-878-3433

**Address:** 60 Chattahoochee St. Helen, GA

## North Georgia Bar-B-Que

**Specialty:** Smoked Bar-B-Que

North Georgia Bar-B-Que is a basic roadside eatery turning out Southern BBQ standards with an outdoor patio for seating.

**Phone:** 706-878-5753

**Address:** 663 Edelweiss Strasse, Helen, GA 30545

# RESTAURANTS NEARBY

## Cafe International

**Specialty:** European sandwiches and dinner entrees

We are a lively, casual eatery located on the water with a large deck. Enjoy your meal as you watch people tube down the river. Kids love us, too!

**Phone:** 706- 878-3102

**Address:** 8546 S Main St. Helen, GA

## The Meeting Place

**Specialty:** Breakfast and Lunch

Our specialty breakfasts include Eggs Benedict, Biscuits and Gravy, and French Toast. We have blueberry, chocolate chip or pecan pancakes. We also have eggs & omelets.

For lunch, we have Angus burgers, sandwiches and comfort foods including meatloaf, hot roast beef with gravy, liver & onions, and more. We also have a kids menu!

Summer Hours: 8:00 a.m. - 3:00 p.m. every day except Wednesday. Closed Wednesdays.

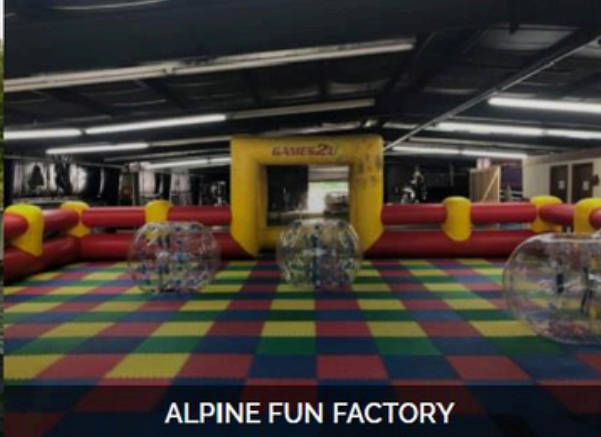
**Phone:** 706-878-3200

**Address:** 8797 North Main Street, Suite 2, Helen, GA

To check more restaurants, visit [here](#).

# THINGS TO DO AROUND

FOR COUPLES, FAMILIES or GROUPS



# THINGS TO DO AROUND



**BAVARIAN MOUNTAIN MINIATURE GOLF & ARCADE**



**CHARLEMAGNE'S KINGDOM**



**COOL RIVER TUBING**



**DUKES CREEK MINES**



**FASCHINGSVEREIN HELEN**



**GEORGIA MOUNTAIN COASTER**

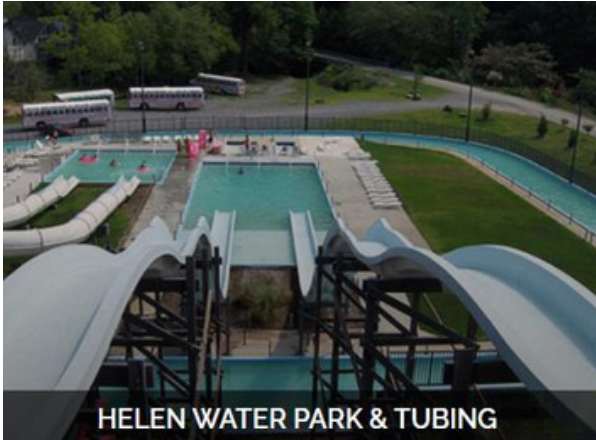


**GOLD CITY CORRAL**



**HANSEL & GRETEL CANDY KITCHEN**

# THINGS TO DO AROUND



**HELEN WATER PARK & TUBING**



**LAVENDER LAMB FARM**



**NORTH GEORGIA ZOO & FARM/WILDLIFE WONDERS**



**OLD TYME PORTRAITS BY TREADWAY**



**PEGASUS HORSE DRAWN CARRIAGES**



**PIRATES COVE ADVENTURE GOLF**



# THINGS TO DO AROUND

SMITHGALL WOODS



THE LOST ROOM: ESCAPE ADVENTURES

STEVE'S OLD TIME PHOTO



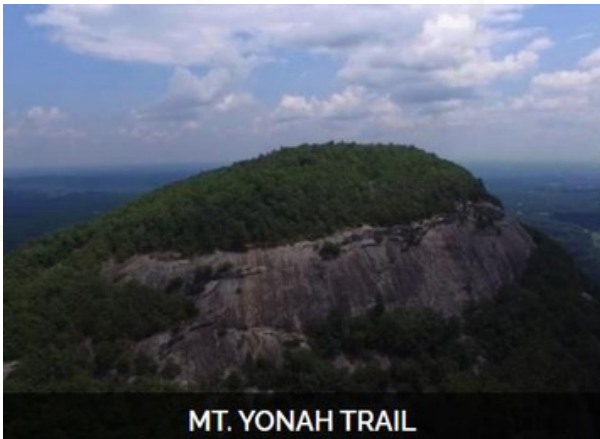
WILDWOOD OUTFITTERS



APPALACHIAN TRAIL



HELEN TO HARDMAN HERITAGE TRAIL



MT. YONAH TRAIL

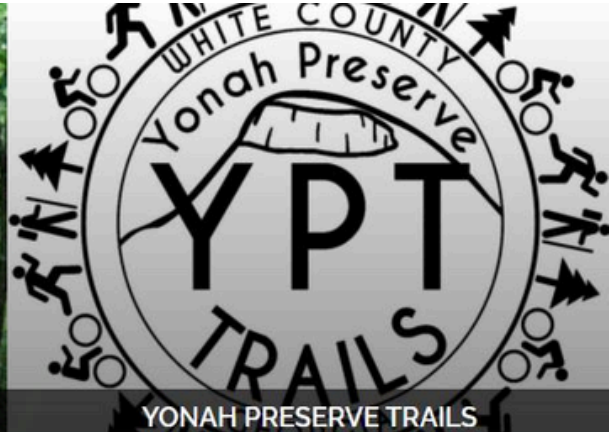


SMITHGALL WOODS STATE PARK

# THINGS TO DO AROUND



UNICOI STATE PARK



YONAH PRESERVE TRAILS



HELEN ARTS & HERITAGE COUNCIL



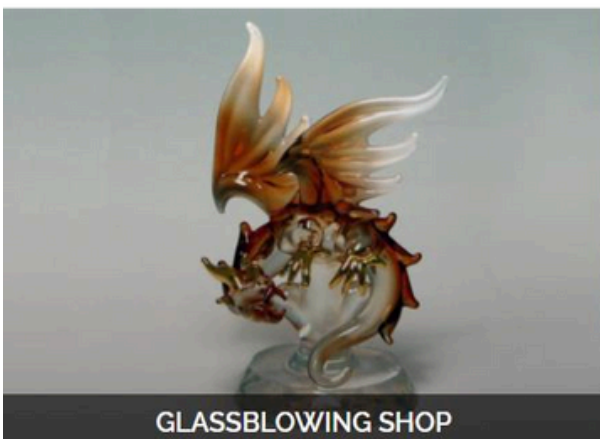
SAUTEE NACOOCHEE CENTER



VIP TRAVEL & VIP SOUTHERN TOURS



YONAH MOUNTAIN VINEYARDS



GLASSBLOWING SHOP



HABERSHAM WINERY

# THINGS TO DO AROUND



HELEN CELLAR PACKAGE



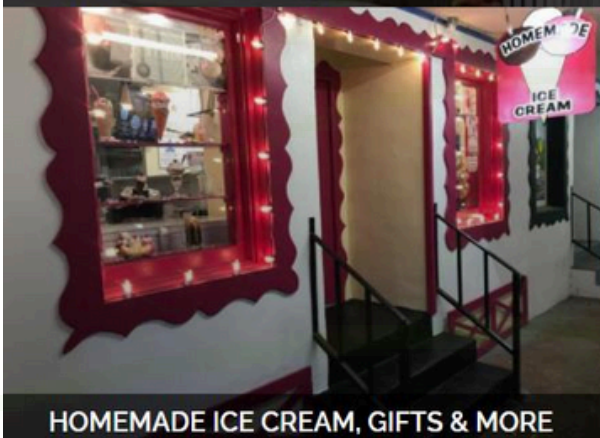
HOFER'S OF HELEN BAKERY & CAFE



NORA MILL GRANARY & COUNTRY STORE



OLD SAUTEE STORE

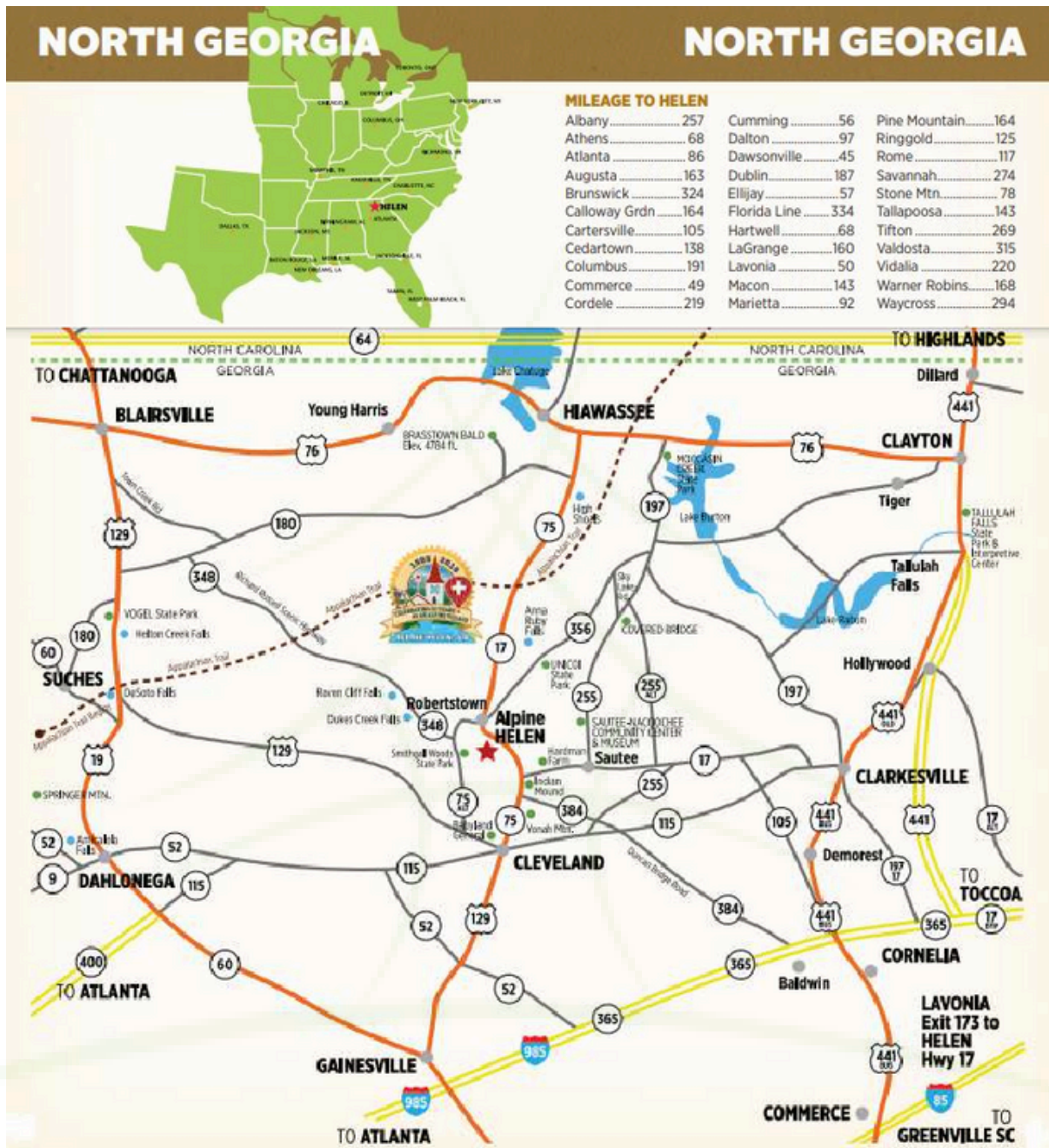


HOMEMADE ICE CREAM, GIFTS & MORE



ITTY BITTY WONDERS AUTHENTIC NATIVE AMERICAN JEWELRY

# MAP GUIDE OF HELEN



# SHOPPING

## **Lavender Lamb Farm**

176 Bugle Dr., Cleveland, GA 30528  
706-865-0510 | [www.lavenderlambfarm.com](http://www.lavenderlambfarm.com)

## **Lindenhaus Imports**

8669 North Main St., Helen, GA 30545  
706-878-2357 | [www.lindenhausimports.com](http://www.lindenhausimports.com)

## **Marleys Vape Shop**

8660 N Main St. 2nd Floor, Helen, GA 30545  
706-400-0028 | [www.marleysvapeshop.com](http://www.marleysvapeshop.com)

## **Mimi's Fashion Jewelry and Accessories**

8689 N. Main St., Helen, GA 30545  
706-878-5527 | [www.helenga.org/business/mimis-fashion-jewelry-accessories](http://www.helenga.org/business/mimis-fashion-jewelry-accessories)

## **Mountain Haus Treats**

23 Chattahoochee St., Helen, GA 30545  
706-400-0952

## **Homemade Ice Cream, Gifts & More**

8635 N Main St., Helen, GA 30545  
706-878-2394 | [www.homemadeicecreaminhelen.com](http://www.homemadeicecreaminhelen.com)

## **Itty Bitty Wonders**

11 Chattahoochee Strasse, Helen, GA 30545  
706-878-0065 | [www.helenga.org/business/itty-bitty-wonders](http://www.helenga.org/business/itty-bitty-wonders)

## **J C Outdoors**

8016 S Main St., Helen, GA 30545  
229-938-4458 | Facebook: J C Outdoors

## **Jolly's Toys**

8800 North Main St., Helen, GA 30545  
706-878-2262 | [www.helenga.org/business/jollystoys](http://www.helenga.org/business/jollystoys)

## **Kaya Vineyard and winery**

5400 Town Creek Rd, Dahlonega, GA 30533  
706-219-3514 | [www.kayavineyards.com](http://www.kayavineyards.com)

## **The Lavender Cottage & Garden**

53 Hwy. 255 N, Sautee Nacoochee, GA 30571  
706-878-0100 | [www.thelavendercottageandgarden.com](http://www.thelavendercottageandgarden.com)

# TRAILS & HIKING

**Unicoi State Park Hiking Trails Smith Creek Trail** This trail offers a serene, dense patches of rhododendron, mountain laurel, hemlock & ferns.

Travel up and over Hickory Nut Ridge and through hardwood stands and across several small mountain, streams and springs. This trail ends at park campground. (4.6 miles)



Directions: Take GA 75 north from Helen for 1 mile. Turn right on GA 356 and drive 1.5 miles.

Turn left at the entrance road to Anna Ruby Falls. Hike the 0.4 mile trail to Anna Ruby Falls. Smith Creek Trail begins at the right of the first observation bridge. Parking fee required.

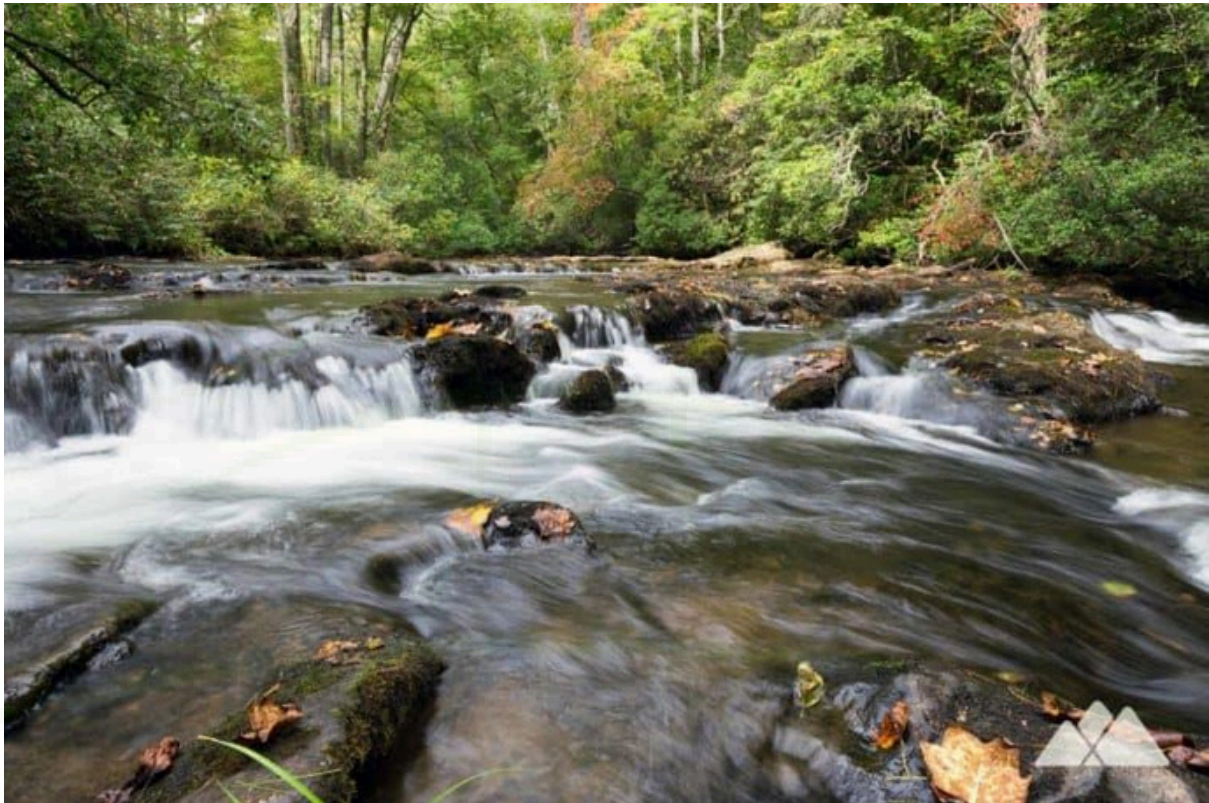
**Smithgall Woods Trails**

706-878-3087 | [gastateparks.org/smithgallwoods](http://gastateparks.org/smithgallwoods)

# TRAILS & HIKING

**Laurel Ridge Trail** This interpretive trail is a moderate 1.6 mile loop that climbs to Laurel Ridge and a view of Mt. Yonah. Take an interpretive guide from the Visitors Center to learn more about the mountain ecosystem. The following trails must be hiked from the Smithgall Woods Visitors Center.

Please include the distance from the Center in your hiking plans. **Wetlands Loop Trail** - (1.3 miles from Visitors Center) An easy ½ mile loop trail that passes a beaver pond and wetland area. Water fowl and frogs are residents that hikers may see or hear. Our Frogs of Smithgall Woods guide makes it possible to identify frogs by their calls. **Martin Mine Trail** - (2.1 miles from Visitors Center) This memorial trail is a moderate 1/2 mile hike to a beautiful waterfall tucked into the mountain. Deeply shaded by rhododendron, it is a cool retreat in summer and a lush hike any time of the year. In addition, there are unmarked roads throughout the park that can be hiked.



# TUBING

## Cool River Tubing CHATTAHOOCHEE RIVER



**Open Memorial Day Weekend thru Labor Day**  
**7 Days a Week 9AM - 6PM**  
*(Weather Permitting)*

**706-878-COOL**  
**800-896-4595**

590 Edelweiss Strasse, Helen, GA  
[www.coolrivertubing.com](http://www.coolrivertubing.com)  
**E-mail: info@coolrivertubing.com**

46

## COOL RIVER ADVENTURES



If you're looking for an exciting attraction in the North Georgia Mountains, Cool River Adventures has something to offer for everyone in the family. Our Zipline Course includes a guided tour starting with two aerial suspension bridges followed by four Zip-lines. You'll soar over the Chattahoochee River twice and experience what Zip-lining is all about. Participants must be 70lb-250lb to accommodate the automatic braking system. Our Aerial Adventure Course contains 3 levels to satisfy all ages. The Small Adventure Course is the perfect start for your little adventurer. It has a total of 5 obstacles with a mini Zip-line at the end (Ages 4-6). The Big Adventure Course is more challenging and includes 11 obstacles with a mini Zip-line at the end (Ages 7+). The Extreme Course will put you to the test. Make your way across the Chattahoochee River through 13 challenging obstacles, followed by a mini Zip-line back down to the ground. Last, but not least, we encourage you to try our 24' Climbing Wall which contains 4 different faces and is suitable for all ages. Give us a call or make a reservation online. We hope to see you soon!

**706-878-9471**  
**112 Poplar Stump Road**  
**Helen, GA 30545**  
[www.coolriveradventures.com](http://www.coolriveradventures.com)  
 Opening 2019:  
 Georgia Mountain Coaster

47



# ZIPLINE

# ZipLine

at Unicoi Zip Line & Aerial Adventure Park

SCREAMING EAGLE  
AERIAL ADVENTURES

Nestled in Georgia's largest State Park, **Unicoi Zip Line and Aerial Adventure Park** has several tour options to take advantage of. In addition to the Zip Line Canopy tours on one of the world's safer closed belay systems, enjoy beautiful scenery, hiking, and numerous adventure trek options, as well as lodging and meals. **ALL at Unicoi State Park.**

*Unicoi Zip Line & Aerial Adventures and Unicoi State Park is your Adventure Resort where fun begins and memories are made.*

## Are You Ready?

We Make FUN Safer! with our patented closed belay system which is on the entire course! *No accidental disconnects here!*

**Unicoi Zip Line & Aerial Adventure Park**  
1288 Hwy 356 • Helen, GA 30545 • [unicozipline.com](http://unicozipline.com) • [info@unicozipline.com](mailto:info@unicozipline.com)  
**For Reservations Call: 706-878-4740**